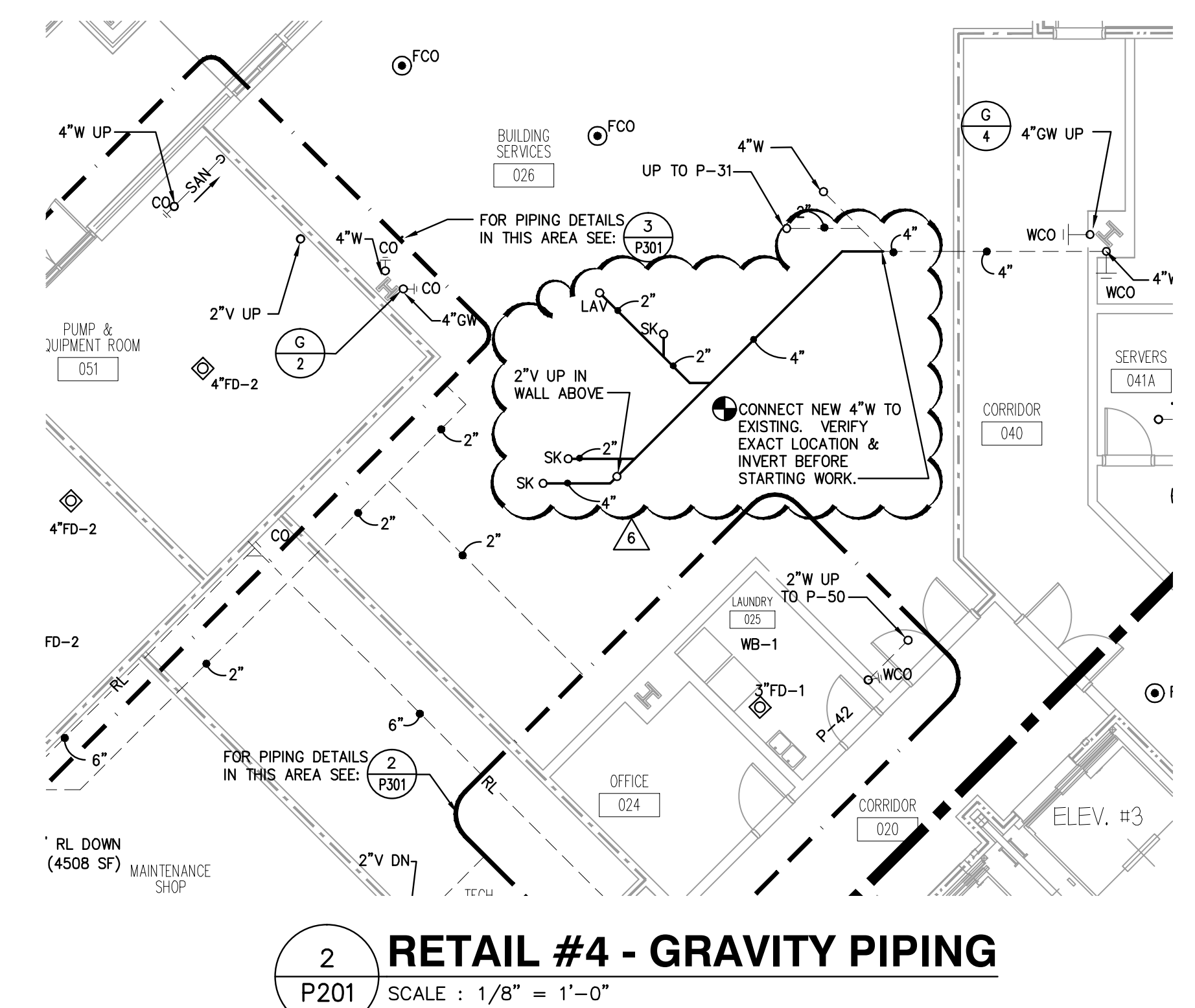


**1 LOWER LEVEL PLAN - AREA "A" - GRAVITY PIPING - EXISTING**  
SCALE: 1/8" = 1'-0"  
F.F.E. = 656.0'



**2 RETAIL #4 - GRAVITY PIPING**  
SCALE: 1/8" = 1'-0"

**GENERAL RETAIL UPFIT NOTES**

1 THE PARTIAL PLANS SHOWN ON THIS DRAWING IDENTIFY THE NEW WORK RELATED TO RETAIL UPFIT WORK. THE ENTIRE FLOOR PLAN SHOWS THE EXISTING WORK. THE EXISTING WORK IN PARTIAL PLAN IS IDENTIFIED DASHED AND NEW WORK IS IDENTIFIED BOLD.

2 SPECIFICATIONS AND DRAWINGS FOR THE BASE PROJECT APPLY.

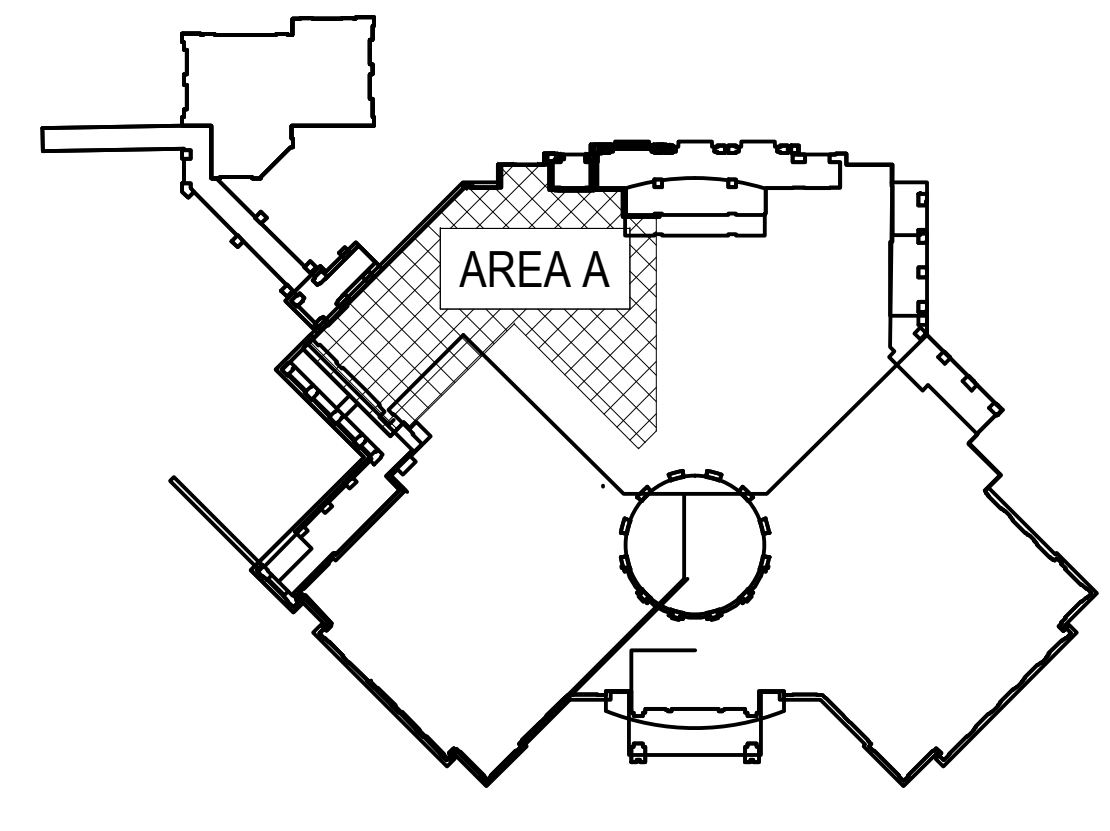
**DRAWING NOTES**

- 1 SEE DRAWING P001 FOR LEGEND SCHEDULE AND NOTES.
- 2 UP TO 4"TS-1
- 3 UP TO 4"TD-1
- 4 UP TO FLOOR CLEAN OUT.
- 5 UP TO 3"TS-1
- 6 2"UP TO P-32
- 7 UP TO VENDOR PROVIDED TRENCH DRAIN.
- 8 2" VENT UP
- 9 2" UP TO HAND SINK
- 10 4" OW DOWN OFFSET HORIZONTALLY BELOW BUILDING BEAM AND CONNECT TO 4" OW AS INDICATED. 2" V UP

**WALL FIRE RESISTANCE RATINGS LEGEND:**

2 HOUR SEPARATION

1 HOUR SEPARATION



**LOWER LEVEL KEYPLAN**

MARK	DATE	DESCRIPTION
△	09/09/09	RETAIL STORE UPFIT
△	04/16/08	ENSTENS REVISIONS
△	03/27/08	WENDYS CHANGES
△	12/05/07	REVISED
CD	03/08/07	BID SET

PROJECT NO: FWA 2214.01  
SCO 020572301

DRAWN BY:

APPROVED BY:

THESE DRAWINGS AND THE PROJECT MANUAL ARE INSTRUMENTS OF SERVICE AND REMAIN THE PROPERTY OF THE FWA GROUP ARCHITECTS. UNAUTHORIZED DUPLICATION OR REUSE WITHOUT WRITTEN CONSENT IS PROHIBITED.

SHEET TITLE  
**LOWER LEVEL PLUMBING PLAN - AREA "A" GRAVITY PIPING**

SHEET NUMBER  
**P201**